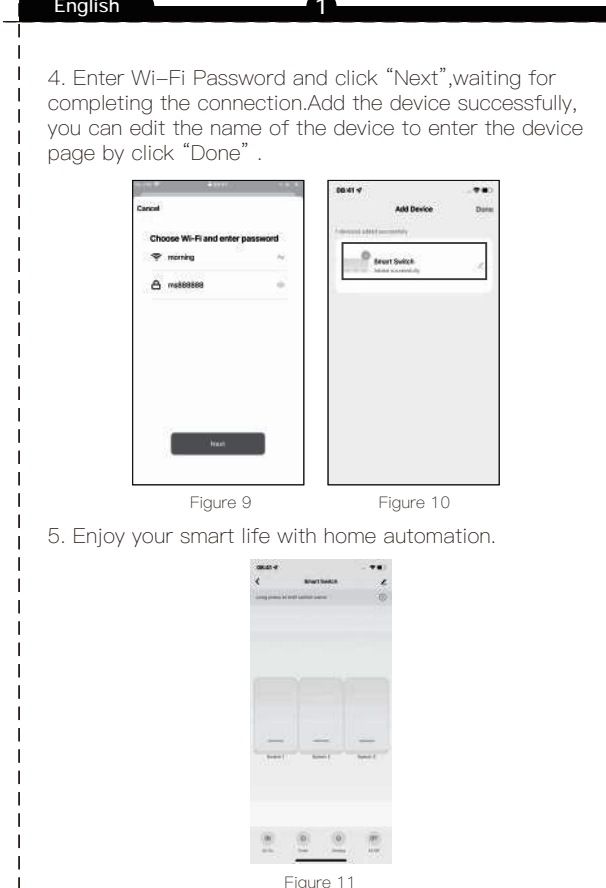


Instruction Manual

Smart Switch

WI-FI-RF-433

• Bitte scannen Sie den QR-Code, um das deutsche Handbuch, das Installationsvideo und die Funktion des Produkts zu erhalten.
 • Escanee el código QR para obtener el manual en español, el video de instalación y la introducción de la función.
 • Veuillez scanner le code QR pour obtenir le manuel en français, le vidéo d'installation et l'introduction des fonctions.
 • Читай инструкцию QR-кода, видео инструкции и описание функций.
 • Leggi il codice QR per ottenere il manuale in italiano, il video di installazione e la guida alle funzioni.
 • Leia o código QR para obter o manual em português, o vídeo de instalação e a introdução das funções.
 • Читай код QR, aby uzyskać instrukcję, filmy instrukcyjne i funkcje.
 • قرا الكود QR للحصول على التعليمات، الفيديو التعليمي، وصف المنتج.
 • 請掃描二維碼以獲取說明手冊、安裝視頻及產品功能。



Product Description

This new designed glass panel wireless touch smart switch is designed with Wi-Fi+RF to replace traditional switches with a variety of ways to control. Now one smart feature is multi-control association to other smart switches is added into the MOES App. Together with the backlight on/off and relay status. And its scratch-resistant glass panel is suitable for different decoration styles with its best value.

Safety Information

Risk of Electric Shock: Electricity can cause personal injury and property damage if handled improperly. If you are not sure about any part of these instructions, please seek professional assistance from a qualified electrician.

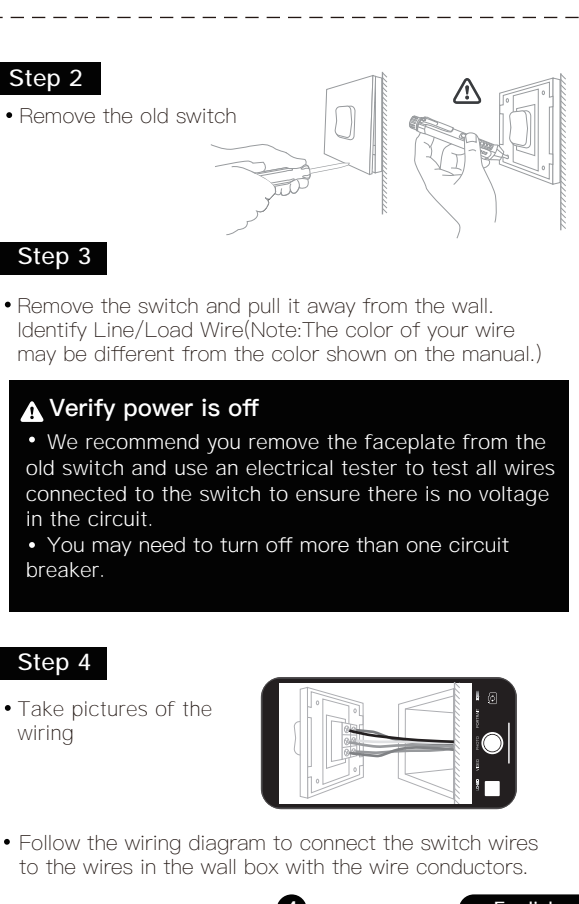
Technical Parameters

Model: WS-EU-RF / WS-US-RF
 Voltage: 90-250V AC, 50/60Hz
 Max. Current: 10A/Gang, Total 10A
 Protocol: Wi-Fi 2.4GHz+RF433MHz
 Frequency Band: 2.412 ~ 2.484GHz
 Maximum Radio Transmit Power: <= 10dbm

Installation

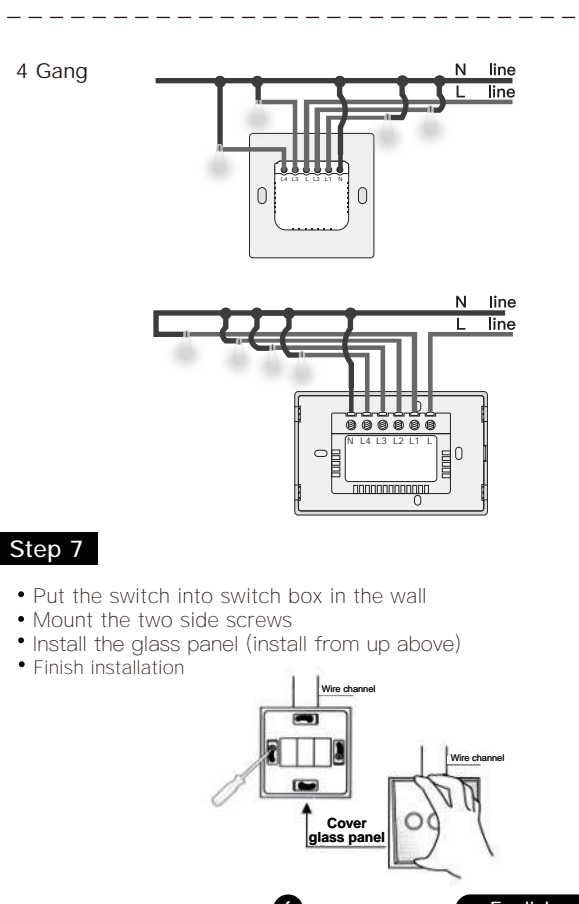
Step 1
 1. Turn off the power at the circuit breaker and use the electrical tester to test the power.
 2. Ensure the power is off before wiring.

Step 2
 1. Remove the old switch.
 2. Verify power is off.
 3. Prepare to install wiring.
 4. Take pictures of the wiring diagram to connect the switch wires to the wires in the wall box with the wire conductors.



Step 5
 1. Remove the panel with screwdriver (Please don't install with electricity power on).

Step 6
 1. Prepare to install wiring.
 A. Live wire connects "L" terminal.
 B. Neutral wire connects "N" terminal.
 C. Lamp wire connects "L1,L2,L3,L4" terminal.
 1 Gang connects "L1" terminal
 2 Gang connects "L1,L2" terminal
 3 Gang connects "L1,L2,L3,L4" terminal
 4 Gang connects "L1,L2,L3,L4" terminal



Preparation for use

1. Download MOES App on App Store or scan the QR code.
 2. Register or Log in.
 3. Add the device.

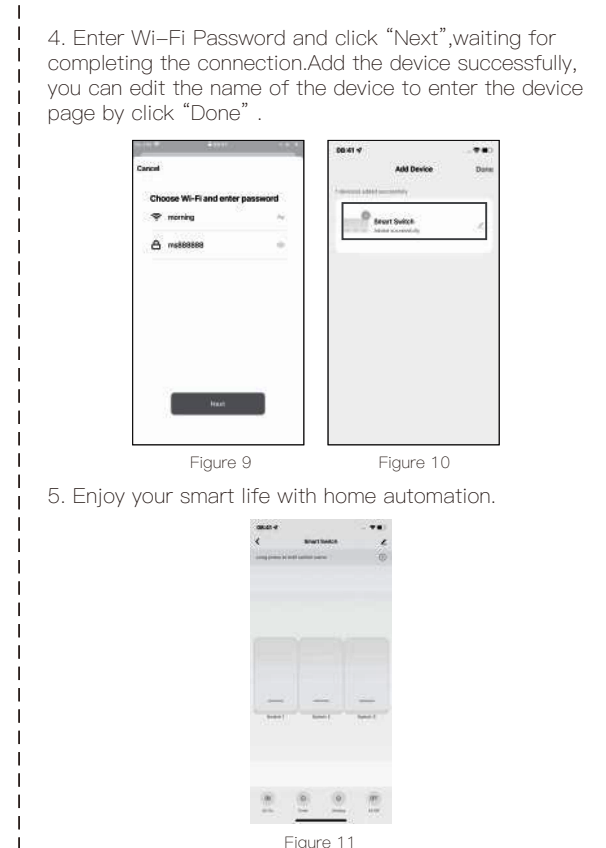
MOES App is upgraded as much more compatibility than Tuya Smart/Smart Life App. Functional well for those controlled by SmartSwitch. Some recommended as the fully new customized service (Note: Tuya Smart/Smart Life App still works but MOES App is highly recommended).

Steps for connecting the APP to the device

Method One:
 1. Make sure your phone is connected to Wi-Fi and Bluetooth.
 2. Scan the QR code to configure the network guide.

Method Two

1. New smartphone phone is connected to Wi-Fi and Bluetooth.
 2. Press and hold the button for about 5 seconds until the blue indicator on the device starts flashing red and blue.
 3. Open the MOES App, click the "+" in the upper right corner, enter "Add Device", the device will appear in the device list.



Troubleshooting

How to reset Wi-Fi code
 1. Press and hold the button for 5 seconds until the blue indicator on the switch flashes fast after 3 seconds. You can click "Done".

Remote radio frequency (RF) link method
 1. Click the setting option and choose RF remote control setup.

Control your home with your voice

Devices are compatible with Amazon Alexa and Google Home supported functionalities. Please use our step-by-step guide on <https://www.moestech.com/blogs/news/smart-devices-linked-voice-speaker>.

FCC compliance statement

FCC Compliance Statement for WS-EU-RF: This device complies with Part 15 of the FCC Rules. Operation is subject to the following two conditions: (1) This device may not cause harmful interference, and (2) this device must accept any interference received, including interference that may cause undesired operation.

RECYCLING INFORMATION

All products marked with the symbol for separate collection of waste electrical and electronic equipment (WEEE Directive 2012/19/EU) should be disposed of separately from unsorted municipal waste.

WARRANTY CARD

Product Information
 Product Name: Smart Switch
 Purchase date: [blank]
 Warranty Period: 2 Years
 Dealer Information: [blank]
 Customer Name: [blank]
 Customer Phone: [blank]
 Customer Address: [blank]

Follow us

Facebook, Instagram, YouTube, Twitter, LinkedIn, and other social media links.

Feedback

Thank you for your support and purchase at MOES. We are always here for your queries, suggestions, and feedback. Please share your experience with us.

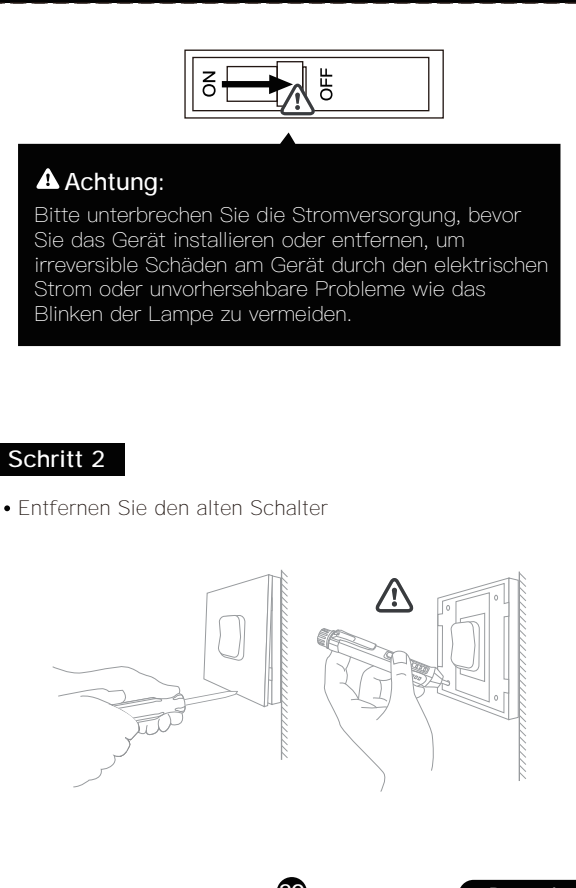
Gebruiksaanwijzing (Deutsch)

Beschreibung des Produkts

Dieses neu gestaltete Glaspaneel drahtlos berührungslos mit Wi-Fi+RF zu ersetzen traditionelle Schalter mit einer Vielzahl von Möglichkeiten zur Steuerung ist in das MOES App integriert. Zusammen mit der Hintergrundbeleuchtung ein/aus und Relais-Status und seine kratzbeständige Glasplatte ist für verschiedene Dekorstile geeignet.

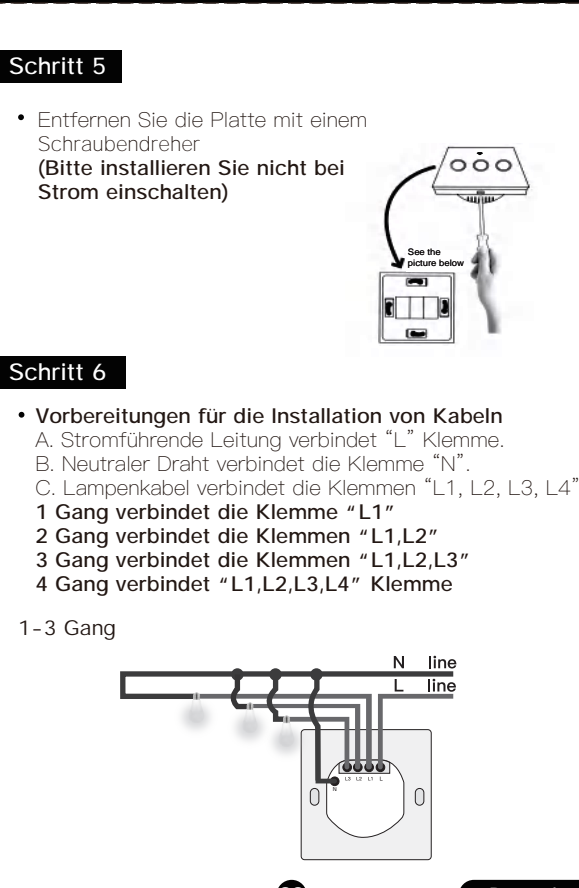
Einrichtung

Wichtig:
 1. Schalten Sie den Strom aus, bevor Sie mit der Installation beginnen.
 2. Entfernen Sie den alten Schalter.
 3. Prüfen Sie die Stromversorgung.



Schritt 1

1. Entfernen Sie die Platte mit einem Schraubenzieher.
 2. Prüfen Sie, ob der Strom ausgeschaltet ist.
 3. Bereiten Sie die Installation vor.



Schritt 2

1. Entfernen Sie den alten Schalter.
 2. Prüfen Sie die Stromversorgung.
 3. Bereiten Sie die Installation vor.

Vorbereitung für den Einsatz

1. Laden Sie MOES App im App Store herunter oder scannen Sie das QR-Code.
 2. Registrieren oder Anmelden.
 3. Registrieren oder Anmelden.

Schritte zum Verbinden der APP mit dem Gerät

1. Stellen Sie sicher, dass Ihr Telefon mit Wi-Fi und Bluetooth verbunden ist.
 2. Öffnen Sie die MOES App.
 3. Scannen Sie den QR-Code.

Fehlersuche

Wenn Sie Probleme bei der Installation oder Bedienung Ihres Geräts haben, lesen Sie bitte das Produktzentralblatt.
<https://www.moestech.com/blogs/news/wi-wi-rf>

Manual de instrucciones (Español)

Descripción del producto

Este nuevo diseño de panel de vidrio inalámbrico táctil inteligente está diseñado con Wi-Fi + RF para reemplazar los interruptores tradicionales con una variedad de formas de control. Ahora una nueva característica es la asociación de múltiples controles a otros interruptores inteligentes en el MOES App.

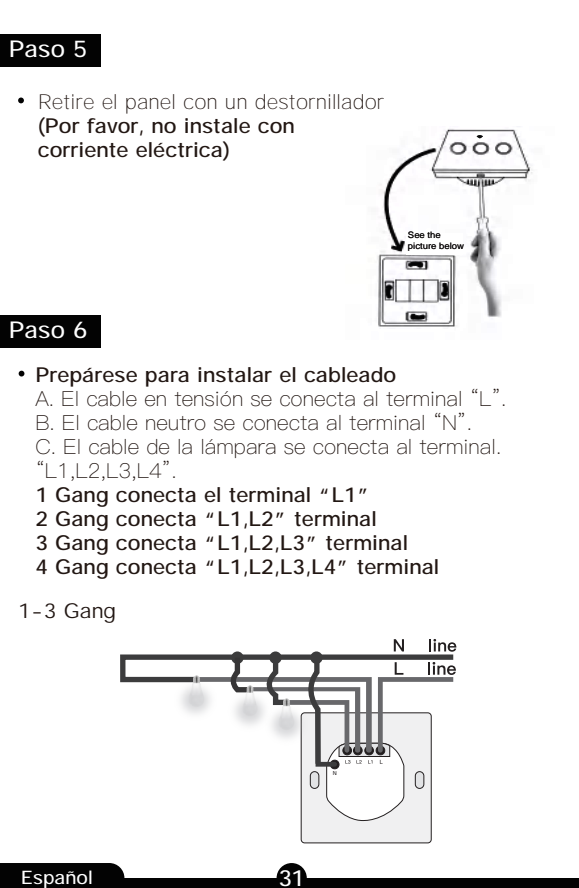
Instalación

Nota:
 1. Desconecte el interruptor y utilice el comprobador eléctrico para comprobar la alimentación.
 2. Quite el interruptor antiguo.
 3. Verifique la alimentación.



Paso 1

1. Desconecte el interruptor y utilice el comprobador eléctrico para comprobar la alimentación.
 2. Quite el interruptor antiguo.
 3. Verifique la alimentación.



Preparación para su uso

1. Descargue MOES App en App Store o escanee el código QR.
 2. Regístrese o inicie sesión.
 3. Regístrese o inicie sesión.

Pasos para conectar la APP al dispositivo

1. Asegure de que el teléfono está conectado a Wi-Fi y Bluetooth.
 2. Mantenga pulsado el botón durante unos 5 segundos.
 3. Abra la aplicación MOES.

Solución de problemas

Si tiene problemas para instalar o utilizar su dispositivo, consulte la guía de solución de problemas.
<https://www.moestech.com/blogs/news/wi-wi-rf>

Manuel d'instruction (Français)

Description du produit

Ce nouvel interrupteur sans fil tactile en verre est conçu avec Wi-Fi+RF pour remplacer les interrupteurs traditionnels avec une variété de modes de contrôle. Maintenant une nouvelle fonctionnalité est ajoutée dans l'application MOES, c'est l'association de multiples contrôles à d'autres interrupteurs intelligents en utilisant l'application MOES.

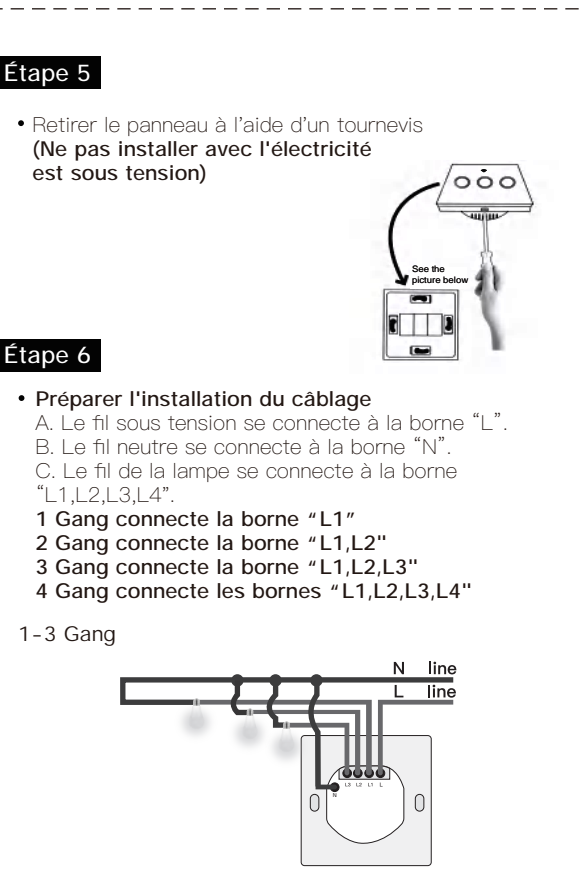
Installation

Attention:
 1. Coupez le disjoncteur et vérifiez le testeur électrique pour tester l'alimentation.
 2. Retirez l'ancien interrupteur.
 3. Vérifiez l'alimentation.



Étape 1

1. Coupez le disjoncteur et vérifiez le testeur électrique pour tester l'alimentation.
 2. Retirez l'ancien interrupteur.
 3. Vérifiez l'alimentation.



Préparation à l'utilisation

1. Téléchargez l'application MOES sur l'App Store ou scannez le QR code.
 2. S'inscrire ou se connecter.
 3. S'inscrire ou se connecter.

Étapes pour connecter l'APP à l'appareil

1. Assurez-vous que votre téléphone est connecté à Wi-Fi et à Bluetooth.
 2. Appuyez sur le bouton et maintenez-le enfoncé pendant environ 5 secondes.
 3. Ouvrez l'application MOES.

Dépannage

Si vous avez des difficultés à installer ou à faire fonctionner votre appareil, veuillez consulter sa fiche technique.
<https://www.moestech.com/blogs/news/wi-wi-rf>

Manuale di istruzioni (Italiano)

Descrizione del prodotto

Questo interruttore intelligente senza fili con pannello in vetro di nuova concezione è progettato con Wi-Fi+RF per sostituire gli interruttori tradizionali con una varietà di modi di controllo. Ora una nuova funzionalità intelligente è aggiunta nell'app MOES, ovvero l'associazione di più controlli a diversi interruttori intelligenti e aggiunta nell'app MOES.

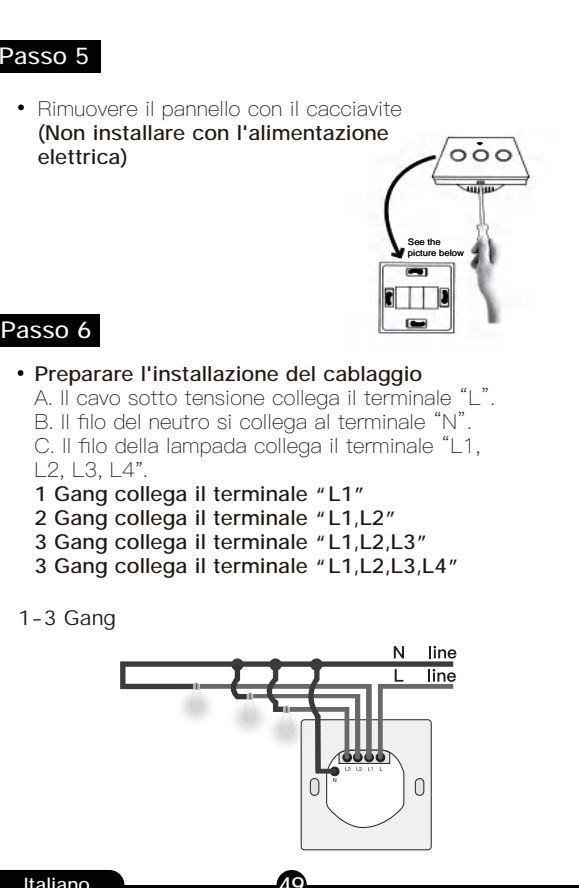
Installazione

Nota:
 1. Prima di effettuare il cablaggio, accertarsi che l'interruttore automatico sia spento.
 2. Rimuovere l'antico interruttore.
 3. Controllare l'alimentazione.



Passo 1

1. Prima di effettuare il cablaggio, accertarsi che l'interruttore automatico sia spento.
 2. Rimuovere l'antico interruttore.
 3. Controllare l'alimentazione.



Preparazione all'uso

1. Scarica l'applicazione MOES su App Store o scansiona il codice QR.
 2. Registrati o accedi.
 3. Registrati o accedi.

Procedura per collegare l'APP al dispositivo

1. Assicurarsi che il telefono sia collegato a Wi-Fi e Bluetooth.
 2. Tenere premuto il pulsante per circa 5 secondi, fino a quando l'indicatore blu dell'interruttore lampeggia rapidamente.
 3. Aprire l'app MOES.

Risoluzione dei problemi

Se hai problemi nell'installazione o nel funzionamento del dispositivo, consultare la scheda tecnica del prodotto.
<https://www.moestech.com/blogs/news/wi-wi-rf>

Manual de instruções (Português)

Descrição do produto

Este novo interruptor inteligente de vidro tem seu painel de vidro. Foi concebido com Wi-Fi+RF para substituir os interruptores tradicionais com uma variedade de formas de controle. Agora, uma nova funcionalidade inteligente foi adicionada ao aplicativo MOES, permitindo a associação de múltiplos controles a outros interruptores inteligentes em uma única aplicação MOES.

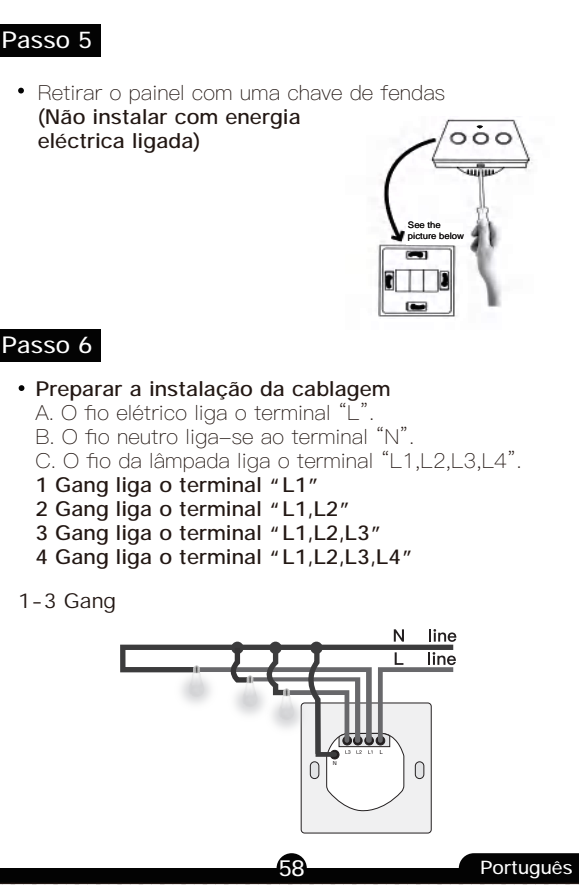
Instalação

Nota:
 1. Desligue o disjuntor e verifique o teste elétrico para verificar a alimentação.
 2. Remova o antigo interruptor.
 3. Verifique a alimentação.



Passo 1

1. Desligue o disjuntor e verifique o teste elétrico para verificar a alimentação.
 2. Remova o antigo interruptor.
 3. Verifique a alimentação.



Preparação para utilização

1. Descarregue a aplicação MOES no App Store ou digitalize o código QR.
 2. Registe-se ou inicie sessão.
 3. Registe-se ou inicie sessão.

Passos para ligar a APP ao dispositivo

1. Certifique-se de que o seu telemóvel está ligado a Wi-Fi e Bluetooth.
 2. Prima e mantenha premido o botão durante cerca de 5 segundos, até o indicador azul do interruptor piscar rapidamente.
 3. Abra a aplicação MOES.

Resolução de problemas

Se tiver problemas na instalação ou funcionamento do seu dispositivo, consulte a ficha de dados do produto.
<https://www.moestech.com/blogs/news/wi-wi-rf>

Руководство по эксплуатации (Русский язык)

Описание товара

Эта новая стеклянная панель беспроводного интеллектуального выключателя с Wi-Fi+RF предназначена для замены традиционных переключателей с различными способами управления. Теперь одна новая интеллектуальная функция, а именно - ассоциация нескольких элементов управления с другими интеллектуальными выключателями, добавлена в приложение MOES.

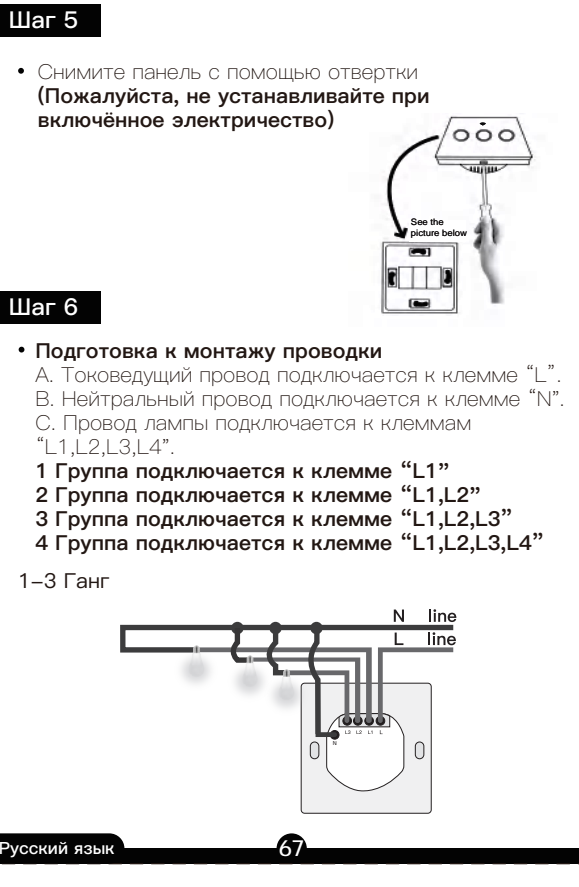
Установка

Внимание:
 1. Отключите автоматический выключатель и используйте тестер напряжения для проверки питания.
 2. Удалите старый выключатель.
 3. Проверьте питание.



Шаг 1

1. Отключите автоматический выключатель и используйте тестер напряжения для проверки питания.
 2. Удалите старый выключатель.
 3. Проверьте питание.



Подготовка к использованию

1. Скачайте приложение MOES в App Store или отсканируйте QR-код.
 2. Зарегистрируйтесь или войдите в систему.
 3. Зарегистрируйтесь или войдите в систему.

Шаги для подключения APP к устройству

1. Убедитесь, что ваш телефон подключен к Wi-Fi и Bluetooth.
 2. Нажмите и удерживайте кнопку в течение примерно 5 секунд, пока синий индикатор не начнет быстро мигать.
 3. Откройте приложение MOES.

Устранение неполадок

Если у вас возникли проблемы с установкой или эксплуатацией устройства, ознакомьтесь с его техническими характеристиками.
<https://www.moestech.com/blogs/news/wi-wi-rf>

Управление своим домом с помощью голоса

Устройства совместимы с функциями Amazon Alexa и Google Home.
<https://www.moestech.com/blogs/news/wi-wi-rf>